

9080
9080T



WEIDEMANN
designed for work



A new dimension.
The 90 series.

Weidemann in the heavyweight class.

The 9080 wheel loader and the 9080T telescopic wheel loader were designed for particularly heavy material handling – as occurs, for example, permanently on large agricultural concerns and biogas systems, on a silo or with a high number of large bales. Also, machines in this class are proven for the recycling sector, industrial construction companies and municipal use. In combination with the latest engine technology (class IV and class V certified), they can work efficiently and are ready for the future. Climb in...

Outstanding all-round visibility. The fully glazed operator's cab is characterised by spaciousness and particularly generous headroom and freedom of movement. This ensures an outstanding view of the attachment, the immediate working area and the entire vicinity of the machine. Naturally, the cab meets the current European machine directive (2006/42/EC) in accordance with ROPS and FOPS protection. Licensing to the EC tractor directive is also possible.

Variety in equipment and fittings. Weidemann wheel loaders and telescopic wheel loaders have a comprehensive and robust range of standard fittings. In addition, depending on your application and preferences, e.g., you can configure engine, drive, operator's cab or hydraulics to your individual needs. It is always your customised Weidemann.



Efficient attachment changing. With its hydraulic quick-change system, attachments can be exchanged with ease. This is how your Weidemann machine is ready for action again immediately. This increases productivity and improves efficiency.

Unrestricted power. Both machines in the 90 series are characterised particularly by a robust construction, very good stability and considerable power output – tipping load, pushing power and lifting power set new benchmarks.

A multitool for many uses. Whether this handling animal feed, stacking, sweeping, mucking out or transporting: With the enormous range of different attachments, your Weidemann becomes a universally usable multitool.

Optimum service accessibility. The models in the 90 series are fitted with a semi-tilting cab. With this come easily removable inspection flaps and the mudguards are removable. This enables uncomplicated access to the engine, hydraulic system and the electrics. Inspection and maintenance of the machine is simplified considerably. The engine hood can be opened up high and thus offers ideal access.



For attackers.
The new 9080.





Hydraulic oil volume adjustment.

If necessary, the "Jog Dial" control element can set the hydraulic oil flow manually. This is advantageous if the machine is driving a hydraulic attachment which does not need the machine's full hydraulic performance. In this way, the operator can work very delicately and in a resource-friendly manner with machine and attachment.



Good all-round visibility and a user-friendly working area.

Plenty of legroom, clearly laid out instrument panel, comfortable operator's seat and an ideal view of the attachment. A working area that motivates the operator and offers all-round support. The console, with the multi-function joystick with "Jog Dial" proportional control and electronic manual throttle and inching was clearly produced with the suspension at the seat, to allow comfortable driving and working.



The most important functions always in view.

With the digital 7" display, you retain an overview of your machine. In addition to standard displays, such as temperature, fuel level and hours run, the active functions are also displayed in the cab, for example active electrical functions, continuous operation of the 3rd control circuit or active differential lock.



Technical data and dimensions.

ENGINE DATA

Engine manufacturer	Deutz
Type of engine	TCD 3.6 L4
Cylinders	4
Max. engine output kW/HP	100/136
at max. speed rpm	2,300
Displacement cm ³	3,621
Exhaust gas standard class	Class IV/class V certified

9080	9080T
Deutz	Deutz
TCD 3.6 L4	TCD 3.6 L4
4	4
100/136	100/136
2,300	2,300
3,621	3,621
Class IV/class V certified	Class IV/class V certified

ENGINE DATA (OPTIONS)

Engine manufacturer	Deutz
Engine model	TCD 4.1 L4
Cylinders	4
Max. engine output kW/HP	115/156
at max. speed rpm	2,300
Displacement cm ³	4,038
Exhaust gas standard class	Class IV/class V certified

Deutz	Deutz
TCD 4.1 L4	TCD 4.1 L4
4	4
115/156	115/156
2,300	2,300
4,038	4,038
Class IV/class V certified	Class IV/class V certified

WEIGHTS

Operating weight (standard) kg	10,720
Tipping load with bucket – machine straight (to ISO 14397) kg	5,290
Tipping load with bucket – machine pivoted (to ISO 14397) kg	4,657
Tipping load with pallet fork – machine straight (to ISO 14397) kg	4,624
Tipping load with pallet fork – machine pivoted (to ISO 14397) kg	4,071

10,720	11,210
5,290	6,594/3,495*
4,657	5,871/3,112*
4,624	5,775/3,265*
4,071	5,142/2,907*

MACHINE DATA

Machine speed (optional) km/h	0-20 (30/40)
Fuel tank capacity l	140
Hydraulic oil tank capacity l	125

0-20 (30/40)	0-20 (30/40)
140	140
125	125

HYDRAULIC SYSTEM

Traction hydraulics working pressure bar	480
Working hydraulics discharge volume l/min	150 (180)
Working hydraulics working pressure bar	250

480	480
150 (180)	150 (180)
250	250

DIMENSIONS

Standard tyres	500/70 R24 XMCL ET40
Total length incl. bucket mm	7,060
Height with cab mm	3,110
Max. pivot pin height mm	4,260
Overall width mm	2,390
Inside radius mm	2,450

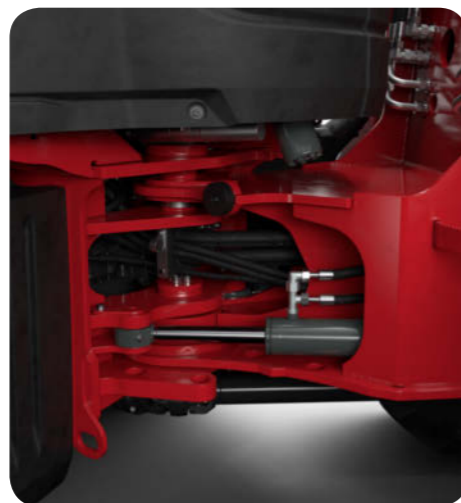
500/70 R24 XMCL ET40	500/70 R24 XMCL ET40
7,060	6,960
3,110	3,110
4,260	5,480
2,390	2,390
2,450	2,450

*Telescopic arm extended



New and powerful transmission.

The Power Drive 370 (PD 370) is a continuously variable hydrostatic transmission, which achieves higher tractive forces and driving speeds than previously developed solutions - all this while maintaining all the advantages of earlier drives in terms of compactness, energy efficiency and operator comfort. With the PD 370, speeds of up to 40 km/h are achievable without changing gear. This facilitates comfortable handling, as neither tractive force interruptions occur, nor is juddering on gear changing detectable.



Articulated joint and floating axle at the rear.

Because of their size and their weight, models in the 90 range are fitted with an articulated joint and a floating axle at the rear, which guarantees optimum manoeuvrability and traction. The steering angle at 40° is generously designed, the turning circle over the tyres is 4.90 m and the inside radius is 2.45 m.



Flexible trailer operation up to 18 tonnes.

A self-recovering hitch is standard. Optionally, an automatic trailer hitch is on offer. In addition, the following hitch options in conjunction with a height-adjustable hitch block are available: Automatic trailer hitch, K50 ball hitch (private car trailers), K80 ball hitch, piton fix and CUNA D3. To move trailer loads safely, there are both a dual line compressed air brake and a hydraulic trailer brake.



WEIDEMANN

designed for work

The Weidemann product range.



Multi-functional Hoftracs®.

Powerful helpers for every application.
Our innovation: the fully electrically operated 1160 eHoftrac®.



Powerful wheel loaders.

Optionally with load arm or telescopic arm.



Compact telehandlers.

A high flier with optimum stability.



Attachments and tyres.

Your Weidemann machine becomes a multitool! The ideal attachment and the right tyres for any and every task.



WM.EMEA.10273.V02.EN/11/2018

Weidemann GmbH

Mühlhäuser Weg 45-49
34519 Diemelsee-Flechtdorf
Germany
Tel. +49(0)5633 609-0
Fax +49(0)5633 609-666
info@weidemann.de
www.weidemann.de